

CHRISTOPHER HODGSON



**Whitstable**  
**£415,000** Freehold

FOR COASTAL, COUNTRY  
& CITY LIVING

# Whitstable

## *Salt Marsh Cottage, 20 Cornwallis Circle, Whitstable, Kent, CT5 1DU*

An extended and beautifully presented terraced house with the benefit of off road parking, enviably positioned with the conservation area and only a short stroll from Harbour Street with its boutique shops and highly regarded restaurants, Whitstable's famous working harbour, Whitstable station (0.7 miles) and less than 250 metres from the beach.

The bright, spacious and largely open-plan accommodation is arranged on the ground floor to provide an entrance hall, sitting room, kitchen/breakfast

room, dining room with doors opening to the garden, a shower room, and a utility cupboard. The first and second floors comprise three bedrooms and two bathrooms, including the principal bedroom with en-suite shower room which overlooks Cornwallis Circle Green.

The secluded rear garden incorporates a garden studio with kitchen and bathroom facilities, and would make an ideal home office space. A driveway to front of the house provides an area of off street parking. No onward chain.



### LOCATION

Cornwallis Circle is a desirable location within the heart of the town and enjoys a convenient position moments from the town centre and within a short stroll of the beach. Whitstable itself is a charming town by the sea with its working harbour and colourful streets of fishermen's cottages. Just a short stroll will take you into the High Street with its diverse range of busy shops and restaurants specialising in local seafood. The A299 ('Thanet Way') dual carriageway is easily accessible offering access via the A2/M2 from London and to the channel ports and Thanet. The high speed Javelin service provides access from London (St Pancras) with a journey time of approximately 73mins. The mainline railway services and the frequent No 4 service and No 5 service in the high street provide public transport connections in all directions.

### ACCOMMODATION

The accommodation and approximate measurements (taken at maximum points) are:

#### GROUND FLOOR

- Entrance Hall 13'6" x 2'6" (4.11m x 0.76m)
- Sitting Room 11'6" x 10' (3.51m x 3.05m)

- Kitchen/Breakfast Room 16'10" x 10'6" (5.13m x 3.20m)
- Dining Room 11'2" x 11'10" (3.40m x 3.61m)
- Shower Room
- Utility Cupboard

#### FIRST FLOOR

- Bedroom 1 12'10" x 10'1" (3.91m x 3.07m)
- En-Suite Shower Room 6'6" x 3'8" (1.98m x 1.12m)
- Bedroom 3 9' x 7'3" (2.74m x 2.21m)
- Bathroom 7'5" x 7'3" (2.26m x 2.21m)

#### SECOND FLOOR

- Bedroom 2 15'3" x 10'7" (4.65m x 3.23m)

#### OUTSIDE

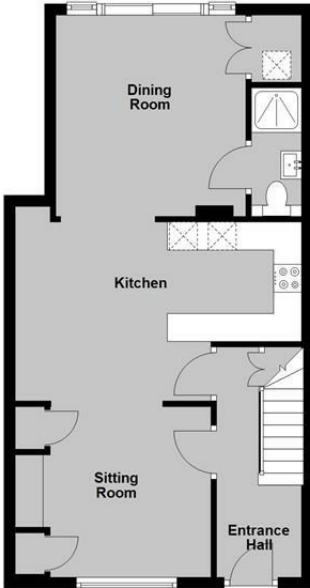
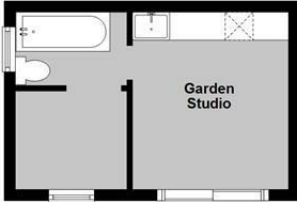
- Garden 32' x 19' (9.75m x 5.79m)
- Garden Studio





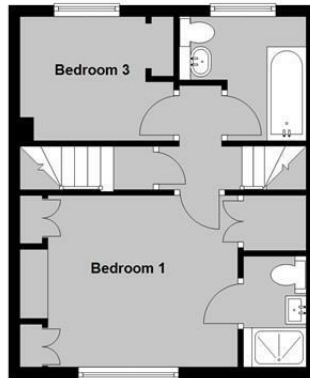
### Ground Floor

Main area: approx. 52.5 sq. metres (565.6 sq. feet)  
Plus outbuildings, approx. 11.7 sq. metres (126.2 sq. feet)



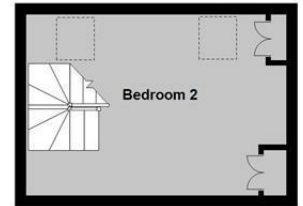
### First Floor

Approx. 32.1 sq. metres (345.7 sq. feet)



### Second Floor

Approx. 15.0 sq. metres (161.7 sq. feet)



Main area: Approx. 99.7 sq. metres (1073.0 sq. feet)  
Plus outbuildings, approx. 11.7 sq. metres (126.2 sq. feet)

## Council Tax Band B. The amount payable under tax band B for the year 2023/2024 is £1,631.47

Christopher Hodgson Estate Agents for itself and as for the vendor or lessor (as appropriate) gives notice that: 1 These particulars are only a general outline for the guidance of intending purchasers or lessees and do not constitute in whole or in part an offer or a Contract. 2 Reasonable endeavours have been made to ensure that the information given in these particulars is materially correct but any intending purchaser or lessee should satisfy themselves by inspection, searches, enquiries and survey as to the correctness of each statement. 3 All statements in these particulars are made without responsibility on the part of Christopher Hodgson Estate Agents or the vendor or lessor. 4 No statement in these particulars is to be relied upon as a statement or representation of fact. 5 Neither Christopher Hodgson Estate Agents nor anyone in its employment or acting on its behalf has authority to make any representation or warranty in relation to this property. 6 Nothing in these particulars shall be deemed to be a statement that the property is in good repair or condition or otherwise nor that any services or facilities are in good working order. 7 Photographs may show only certain parts and aspects of the property at the time when the photographs were taken and you should rely upon actual inspection. 8 No assumption should be made in respect of parts of the property not shown in photographs. 9 Any areas, measurements or distances are only approximate. 10 Any reference to alterations or use is not intended to be a statement that any necessary planning, building regulation, listed building or any other consent has been obtained. 11 Amounts quoted are exclusive of VAT if applicable. 12 Whilst reasonable endeavours have been made to ensure the accuracy of any floor plan contained in these particulars, all measurements and areas are approximate and no responsibility is taken for any error, omission or mis-statement. This plan is for illustrative purposes only and should be used as such by any prospective purchaser. 13 Any mapping contained within these particulars is for illustrative purposes only and should be used as such by any prospective purchaser. No responsibility is taken for any error, omission or mis-statement. 14 Any computer generated images contained within these particulars are for illustrative purposes only and should be used as such by any prospective purchaser.

Energy Efficiency Rating		Current	Target
100 Energy efficient - Green rating scale	A		
75 Energy efficient - Green rating scale	B		
50 Energy efficient - Green rating scale	C		
25 Energy efficient - Green rating scale	D		
10 Energy efficient - Green rating scale	E		
5 Energy efficient - Green rating scale	F		
1 Energy efficient - Green rating scale	G		
Minimum Energy Efficient - Green rating scale			
England & Wales		ED	Directly comparable

95-97 TANKERTON ROAD, WHITSTABLE CT5 2AJ | CHRISTOPHERHODGSON.CO.UK

